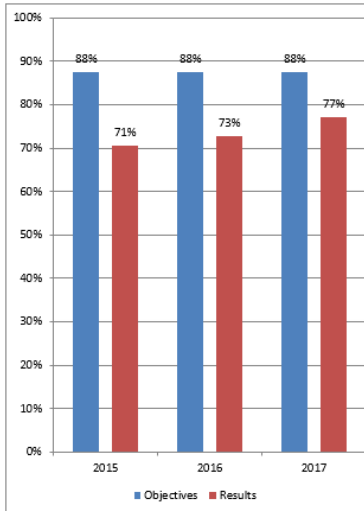
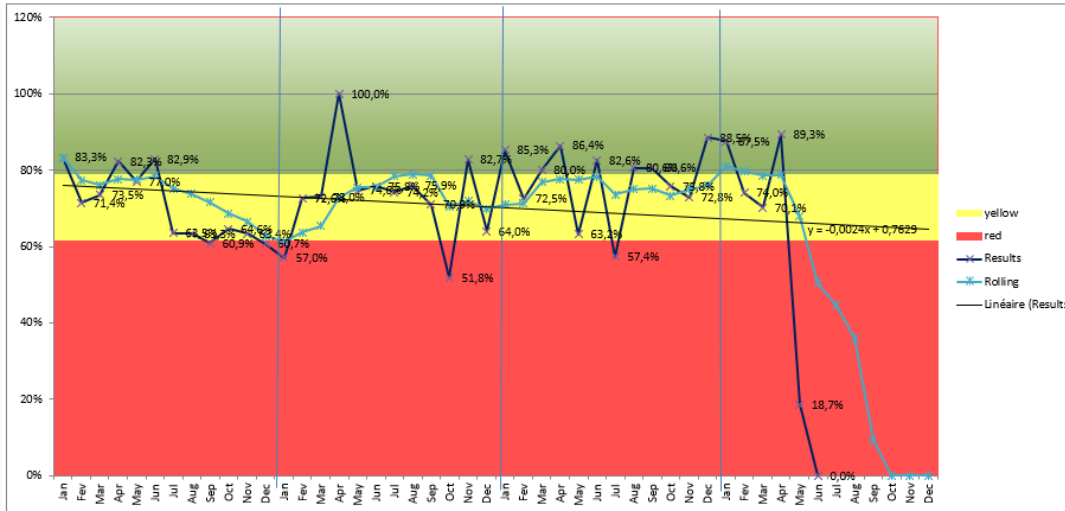


## Titre : C1- Avg Supplier Overtime Delivery (%)

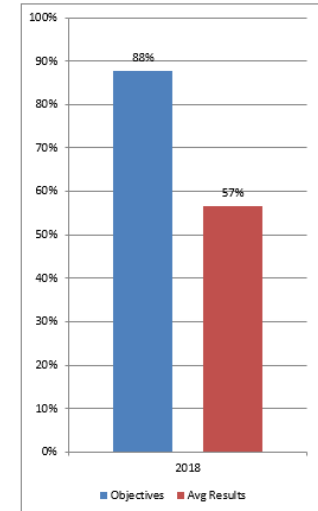
Previous Avg. Realizations



Realization : 2015 to 2018



Objectives



Maitre d'œuvre : Benoit/Mahn  
Mise à jour : Monthly

Formulation: Number of product received on time in the current month / total number of product received. This KPI represent the real physical activity on the floor, not the paperwork information.

The based calculation date is when the product is physically received at Edmit.

### Review Summary and Action plan

Supplier on-time delivery are calculated based on current PO for the month only. In 2017-2018, complete information will use from the receiving records. Actually, the results are conservative. Improvement of information are progressing to obtain reliable information. Improvement is focus by having a more realistic delay on the PO and to ensure that the receiving inspection is perform on the lead time. After the registrar audit, integration decision will be taken and the process will probably improve. Linear trend show that the average OTD delivery positively grow and become in better control. Action continue to be in place to improve the realistic information (delivery date) on the PO. Sore problems for the oversee supplier in Asia ) and xxx start to perform support. Waiting for futur impact.